

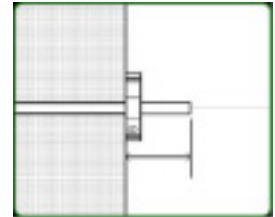
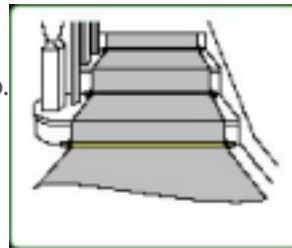
## Stair Rods

Our stair rods are made to measure, so we need a tip to tip measurement, including the finial. Whilst the majority of stairs have a regular distance between the edge of the carpet and the stringboard or spindles, check to see if the newel post or other obstruction affects the required length of rod on that step.

### Measuring Stair Rods

All our rods are 12.5mm (or ½") diameter. For this size we recommend the stair rod should be 10cm (or 4") over the width of the carpet - 5cm (or 2") either side.

We recommend fitting a stair rod on the bottom step.



### Installing Stair Rods

The bracket should sit on the staircase itself, directly alongside the carpet. Make bradawl guide holes for the screws and then screw the bottom half of the bracket to the stair. Do the same on the other side and then lay the stair rod in the brackets and screw the top half of the bracket to the bottom, ensuring the rod is protruding an equal amount on each end.

On no account should the top and bottom of each hinged bracket be mixed as they are a set. They cannot be interchanged with the other brackets, so we recommend not mixing the bracket components when preparing them for fitting.

**Note: Stair rods are for decorative use only, the carpet must be secured by another means.**

### Frequently Asked Questions

#### **Will our products need polishing?**

No. All our brass products have a clear lacquer that prevents them from tarnishing. To clean, simply wipe with a damp cloth. DO NOT use metal cleaning products as this will damage the lacquer, causing tarnishing and damage to any finish you may have chosen.

#### **Can stair rods be altered once ordered?**

No. It is vital to measure the rods before ordering to ensure the lengths are correct, as they cannot be altered once they have been made.

#### **Can the rods be used as the sole means for securing the carpet?**

No. We strongly recommend that the carpet is secured by another means. Fitting the carpet correctly increases its lifespan and improves the safety of the staircase.

